

# SAINT GABRIEL THE ARCHANGEL 2020-2024 STRATEGIC PLAN



# WHERE WE ARE TODAY

**2,112** Parish Families

6,597 Members

**62** New Member Families

237 Mass Participants/Each Mass

55 Youth Ministry Participants

75 Confirmation Students

**51** Baptisms

74 First Communions

**20** Music Academy Students

**588** School Students

87 Preschool Students

123 After School Enrichment Students

178 Summer Campers

**4,866** Facebook Followers

444 Instagram Followers

262 Twitter Followers



# PROCESS OVERVIEW

## **2015-2019 Strategic Plan**

Celebrated Key Accomplishments

## **2018 Discernment Process**

Consideration and Review

Best practices

Who we are & What we want to do

## **Parish Council Retreat**

Consideration and Review

Benchmarks

Financial status

**Sought Advice from Archdiocesan Leadership**

**Hired Consultant Johnson Grossnickles**

**Established Strategic Planning Committee**

## **Defined Pillars/Workgroups**

Workgroup Co-Chairs selected

Met with constituencies and subject-matter experts

**Established goals & defined deliverables**

**Developed timelines**

**Assessed available resources**

**Developed final strategies**

**Established Communication Plan**



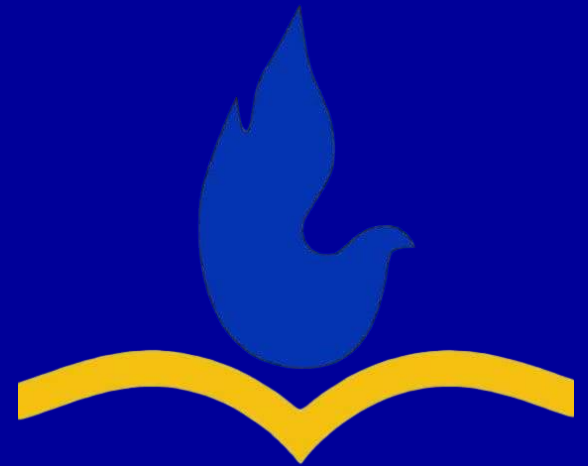
**Now: 2020-2024**

**Plan Implementation**



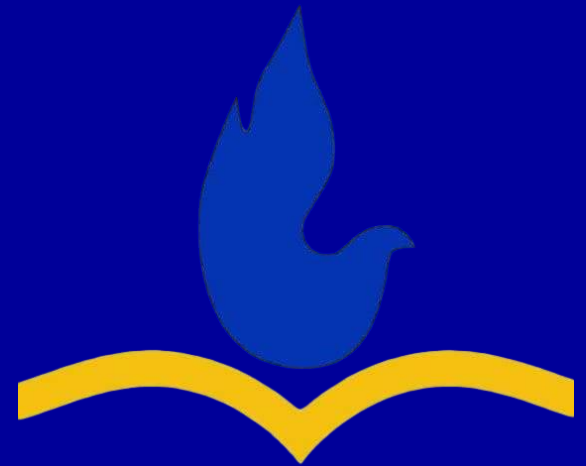
# VISION

*The Catholic community where you encounter Jesus Christ each and every day in each and every person.*



# MISSION

*St. Gabriel the Archangel Parish, a caring, welcoming community, seeks to praise God in our prayer and work, nurture growth in the Catholic faith, and compassionately serve others.*



# OUR VALUES

## ❖ Inclusivity and Hospitality

*We strive to welcome all as Christ, respect the dignity and differences of others, and create a close-knit community.*

## ❖ Tradition and Innovation

*We embrace our Roman Catholic tradition and the rich heritage of our Parish and school while encouraging creative and innovative expressions of faith in action.*

## ❖ Lifelong Faith Formation and Education

*We provide our youth with a strong foundation in the Roman Catholic faith through our school, sacramental preparation program, and parish religion education program (PREP) and offer adults of all ages extensive opportunities for ongoing formation in the faith.*

## ❖ Stewardship and Community Engagement

*We see our time, talent and treasure as gifts from God which we are called to share with others as we faithfully and prudently steward our Parish resources and generously assist others in our community, the Archdiocese of Louisville, and the world.*



# OUR FOCUS AREAS

- ❖ **Worship & Sacraments**
- ❖ **Lifelong Formation & Family Life**
- ❖ **Service & Outreach**
- ❖ **Stewardship of Resources**



# WORSHIP & SACRAMENTS

*Fulfilling the mission of Christ and the Church*

- ❖ **Goal 1:** Increase weekend Mass attendance by 15% by 2024.
- ❖ **Goal 2:** Strengthen parishioner involvement in liturgical ministries.





# Lifelong Formation & Family Life

*Setting a strong foundation for the Parish and School*

- ❖ **Goal 3:** Increase student enrollment (pre-school through 8<sup>th</sup> grade) by 15% by 2024.
- ❖ **Goal 4:** Provide for greater overall engagement of parishioners in parish programming.



# Service & Outreach

*To the Parish and Community*

- ❖ **Goal 5:** Maximize opportunities for parishioners and school families to serve the Parish and greater community.



# Stewardship of Resources

*Human, Physical and Financial*

- ❖ **Goal 6:** Find large-scale alternative revenue sources to fund operating and capital projects.
- ❖ **Goal 7:** Develop and implement an overall master plan for the St. Gabriel campus (buildings and grounds).
- ❖ **Goal 8:** Increase parishioners', school families', and the surrounding community's interaction with St. Gabriel Parish.



# MONITOR & MEASURE

- ❖ Parish Council owns the plan and will be responsible for each focus area.
- ❖ Utilize the Parish Council/Parish Staff partnership.
- ❖ Energize the Staff/Council Responsible Parties.
- ❖ Use implementation grid as monitoring document.
- ❖ Provide quarterly updates of plan progress at Parish Council meetings and on website
- ❖ Provide an annual update and look ahead to next year in Parish Accountability Report
- ❖ Be realistic about the need to move and shift tactics as needed, keeping in mind the sequencing of certain items.

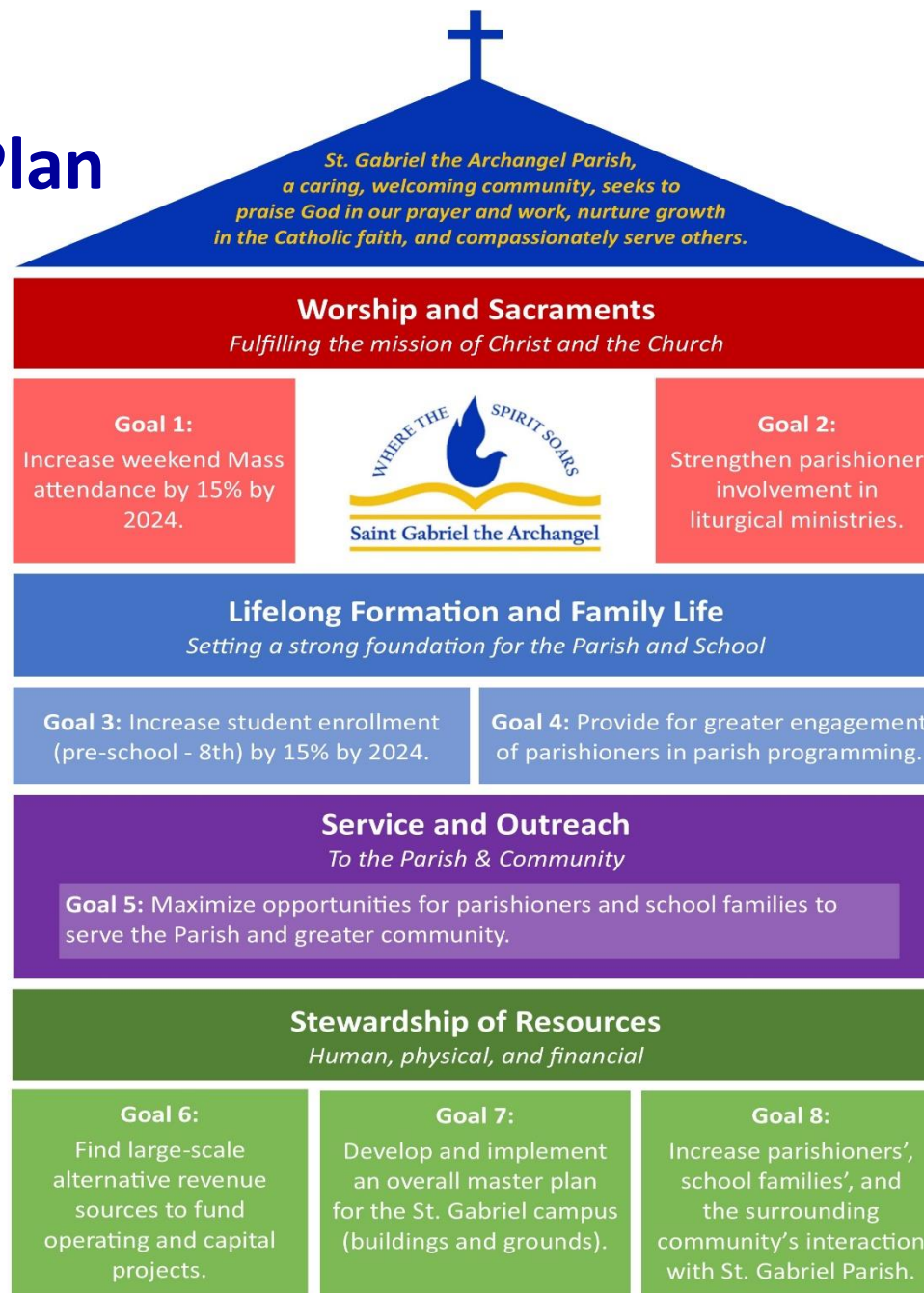


# HOW TO BE A PART OF THE PROCESS

- ❖ **Stay Informed** – Regular updates to the 2020-2024 Strategic Planning webpage by the Parish Council (<https://www.stgabriel.net/strategic-plan/>) – Periodic campus-wide updates on developing strategies
- ❖ **Celebrate Successes** – As stakeholders, your success is our success and vice versa
- ❖ **Get Engaged** – Participate in implementation, provide and get feedback, focus groups, and other engagement opportunities
- ❖ **Share Your Questions, Comments, and Concerns** – Feedback form on strategic planning webpage – Openly engage members of the Parish Council



# 2020-2024 Five-Year Plan





# WHERE THE SPIRIT SOARS

